

List of Design Data

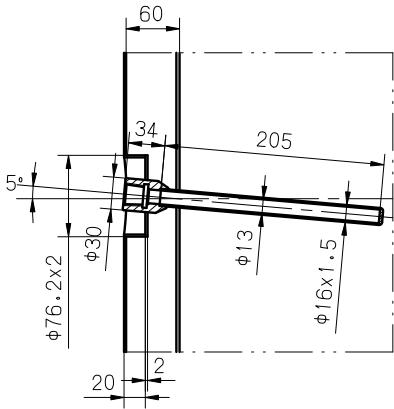
容器类别(Vessel Category)		常压(Normal Pressure)	
参数名称(Description of Parameter)		容器内(Vessel)	夹套内(Jacket)
工作压力(Working Pressure)	bar	1.5	3
设计压力(Design Pressure)	bar	1.5	3
工作温度(Working temperature)	°C	-5 to +40°C	
设计温度(Design temprature)	°C	-5 to +40°C	
设计真空度(Design vacuum)	mm WC		
介质(Medium)		啤酒(Beer)	
介质密度(Medium Density)	kg/m³	1040	
主要承压元件材料(Main compressive component)		304	
腐蚀余量(Corrosion Allowance)	mm	0	0
焊接接头系数(Welding joint coefficient)		0.7	
全容积(Gross Volume)	BBL	73.27	
有效容积(Net Volume)	BBL	60	
安全阀起跳压力(Safetly Valve ACL Pressure)	Bar		
传热面积(Heat exchanging area)	m²	8.53	
保温材料(Insulation Material)		PU	
保温厚度(Insulation thickness)	mm	60	
液压试验压力(Level Testing Pressure)	bar	2.0	4.0
气密性试验压力(Dry Check Pressure)	bar		

- 壳体焊缝应保证内壁平齐,焊缝须磨平,不得有凹凸棱角及划痕。
The inner wall shall be flat.The welding seam on inner surface shall be Grinded.
Concave-cover arris and scratch mark are not allowed.
- 内表面 (Inner surface)
S. 碟形封头抛光到 $Ra \leq 0.6 \mu m$ 。(The dish head should be polished to $0.6 \mu m$)
S. 筒体内表面2B。(Inner surface of the cylinder: 2B)
S. 焊缝抛光到 $Ra \leq 0.6 \mu m$ 。(The welding seam should be polished to $0.6 \mu m$)
S. 内表面酸洗钝化。(The inner surface of stainless steel should be pickled and passivated.)
- 壳体外表面: $Ra \leq 0.8 \mu m$ 。
The outer surface: $Ra \leq 0.8 \mu m$.
- 制造完后,设备内以2.0bar(表压)进行水压试验,夹套内以4.0bar(表压)进行水压试验,保压30分钟,设备不得漏水做水压试验,After finishing tank construction,do 2.0bar (meter pressure) water pressure test for tank, do 4.0bar (meter indicated) for jacket during 30 minutes. It is not allowed do water test with horizontal condition.

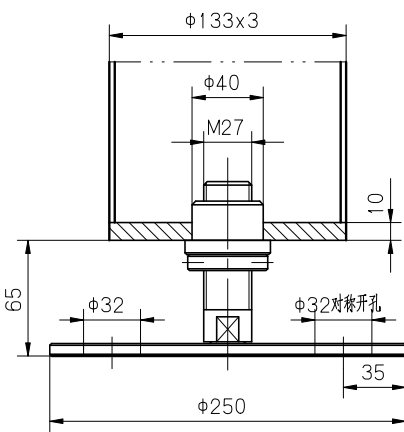
M1	6.0"			Φ152.4×2	ISO
N1	1/4"	压力表接口(PRESSURE GAGE CONN.)		1/4"	NPT
S1	1.5"			Φ38.1×1.5	ISO
R1	1.5"			Φ38.1×1.5	ISO
O1	1.5"	出口(OUTLET)		Φ38.1×1.5	ISO
D1	530X430	人孔(MANHOLE)		530X430	
T1-2	1/2"	温度计接口(TEMPERATURE CONN.(TT))		1/2"	NPT
G1-6	1.0"	冷媒进/出口(COOLING INLET/OUTLET)		1.0"	NPT
F3	2.0"			Φ50.8×1.5	ISO
F2	2.0"			Φ50.8×1.5	ISO
F1	1.5"	CIP进口(CIP INLET)		Φ38.1×1.5	ISO
V1	1.5"			Φ38.1×1.5	ISO
V2	1.5"			Φ38.1×1.5	ISO
V3	2.0"			Φ50.8×1.5	ISO
序号	公称尺寸	公称压力	用途或名称	连接尺寸	备注
MARK	DN	PN	DESCRIPTION	CONNECT SIZE	REMARKS

CONNECTIONS

V
1:5



III
1:3



图名(TITLE)		304 60BBL FERMENTER		工程号(PROJECT NO.)	
制图(DRAWN)	校核(CHECKED)	批准(APPROVED)	比例(SCALE)	日期(Y/M/D)	图号(DRAWN NO.)
			1:10		PFJ70H-0L10
修改(REV.)					4